

YAHTZEE

Yahtzee v2.1

User Guide

Author: Guyfawkes – <http://www.emuholic.com>

Game Homepage: <http://www.emubboards.com/guyfawkes/>

Yahtzee features full support for a USB mouse and F-200 Touch Screen. If you do not have a Breakout Board or Cradle you can purchase one from our sponsors www.gp2xshop.com and <http://www.gamersection.ca/> which have a great selection of GP2X and accessories.

YAHTZEE

Important Health Warning About Playing Video Games

Photosensitive Seizures

A very small percentage of people may experience a seizure when exposed to certain visual images, including flashing lights or patterns that may appear in video games. Even people who have no history of seizures or epilepsy may have an undiagnosed condition that can cause these 'photosensitive epileptic seizures' while watching video games.

These seizures may have a variety of symptoms, including light-headedness, altered vision, eye or face twitching, jerking or shaking of arms or legs, disorientation, confusion, or momentary loss of awareness. Seizures may also cause loss of consciousness or convulsions that can lead to injury from falling down or striking nearby objects.

Immediately stop playing and consult a doctor if you experience any of these symptoms. Parents should watch for or ask their children about the above symptoms, children and teenagers are more likely than adults to experience these seizures.

YAHTZEE

Contents

Page 2 – Important health warning about playing video games

Page 3 – Contents

Page 4 – Getting Started

Page 5 – Game controls

Page 8 – Menus Overview

Page 10 – How To Play

Page 12 – Media Player

Page 13 – Credits, donations and other information.

Page 14 – Other software from Emuholic

YAHTZEE

Getting Started

Extract the contents of the .zip file to your Secure Digital Card. The game may be extracted to any location on the card but the file and folder hierarchy must be kept.

yahtzee.gpe

/yahtzee/

/gfx/

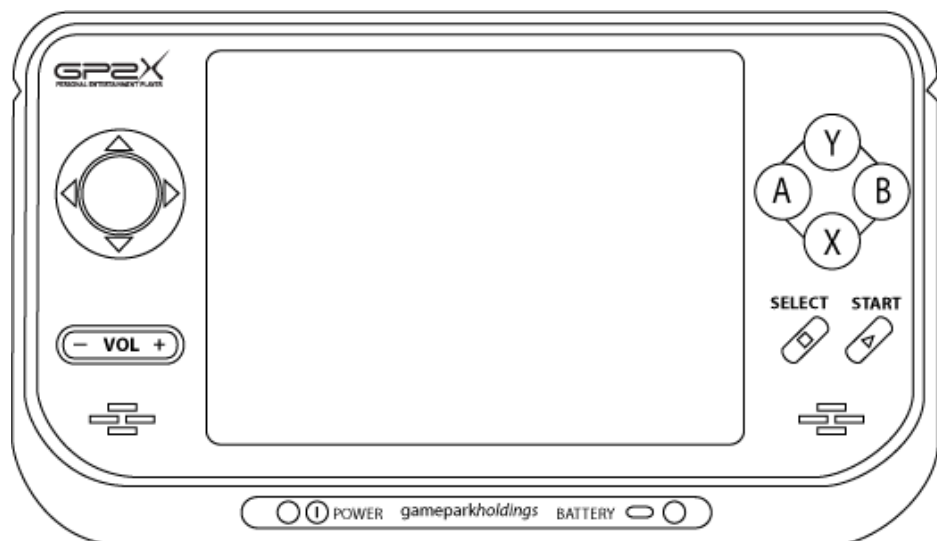
/sfx/

If you are unsure how to do this please refer to the GP2X User Guide at <http://archive.gp2x.de/cgi-bin/cfiles.cgi?0,0,0,0,23,933> for more information.

Once the files are copied, choose the Game option from the GP2X Menu and navigate to the **yahtzee.gpe** file. Press the **B** button to start the game.

YAHTZEE

Game Controls - Menu



Move between options



or



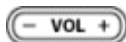
Accept menu choice



Cancel menu choice



Play next music track on your playlist

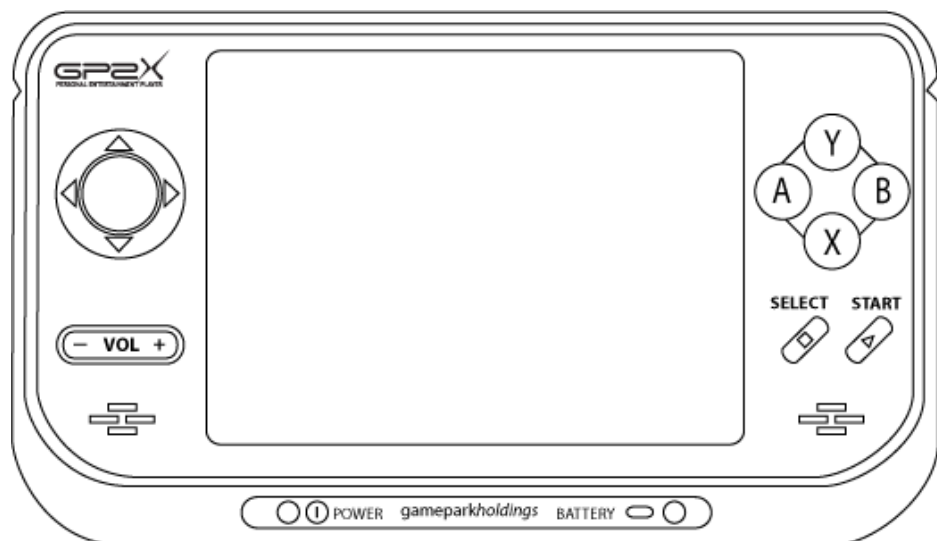


Increase or Decrease volume

A USB mouse may also be used to navigate the menus if you have a Breakout Board (BOB) or Cradle for your GP2X. Or touch the menu options if you have an F-200.

YAHTZEE

Game Controls – In Game



Move cursor



Choose option



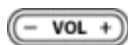
Roll dice



Pause the game



Play next music track on your playlist



Increase or Decrease volume

A USB mouse may also be used to control the game if you have a Breakout Board

YAHTZEE

(BOB) or Cradle for your GP2X. Or touch the menu options if you have an F-200.

YAHTZEE

Menus Overview

Main Menu

Game

Choose this to go to the Game Setup Menu.

Highscores

View the Highscores Screen

Options

Enter the game Options Screen

Help

View the in game help.

Credits

View the credits.

Quit

Return to the GP2X Menu.



Game Setup

Start

Start the game with the current settings.

Players

Choose upto a maximum of eight players.

Score Assistance

Enable or disable the Score Assistance feature which automatically calculates the possible current score for each box. Default setting ON.



YAHTZEE

Back

Return to the Main Menu

Options

Music

Enable or disable music. Default setting ON.

SFX

Enable or disable sound effects. Default setting ON.

Mouse Cursor

Enable or disable the mouse cursor. Default setting ON.

Game Cursor

Enable or disable the in game cursor, useful if you use touch screen. Default setting ON.

Rescan Playlist

Rescan your SD card for music files.

Clear High scores

Clear the high scores for Yahtzee.

Back

Return to the Main Menu.



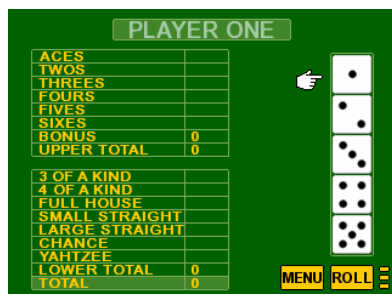
YAHTZEE

How to play

The Yahtzee scorecard contains thirteen boxes divided between two sections: The upper section and the lower section.

Upper Section

In the upper section, each box is scored by summing the total number of dice faces matching that box. For example if a player were to roll three "twos", the score would be recorded as 6 in the twos box. If a player obtains or exceeds 63 points, a bonus of 35 points is added to the upper section score. Though 63 points corresponds to three-of-a-kind for each of the six die faces, a common way to get the bonus is rolling four (or five) of a larger number so that fewer of the lower ones are needed.



Lower Section

The lower section contains a number of poker-themed combinations with specific point values:

- * Three-of-a-Kind (sum all dice)
- * Four-of-a-Kind (sum all dice)
- * Full House 25pts
- * Small straight 30pts
- * Large straight 40pts
- * Five-of-a-Kind (Yahtzee) 50pts
- * Chance (sum all dice)

Chance often acts as discard box for a turn that will not fit in another category (thus the name), although during a lucky game it can be used to record a high score.

On each turn, a player gets up to three rolls of the dice by pressing either the X button or by clicking or touching the Roll button found in the bottom right of the screen.

YAHTZEE

He or she can save any dice that are wanted to complete a combination by moving the cursor to the dice to be held and pressing the B button or simply by clicking or touching the respective (the dice will toggle between black for held and white for unheld) and then re-roll the other dice.

After the third roll, the player must find a place to put the score (though he or she can choose to end the turn and score after one or two rolls if desired). This can be done by moving the cursor to the chosen score box and pressing the B button or by clicking or touching the respective score box. If the resulting combination of dice will not fit in any unused scoring category, a "zero" will be entered into the chosen score box. Each player's total score is calculated by summing all thirteen score boxes.

PLAYER ONE	
ACES	3
TWOS	2
THREES	3
FOURS	12
FIVES	0
SIXES	0
BONUS	0
UPPER TOTAL	5
3 OF A KIND	16
4 OF A KIND	26
FULL HOUSE	25
SMALL STRAIGHT	30
LARGE STRAIGHT	0
CHANCE	16
YAHTZEE	0
LOWER TOTAL	81
TOTAL	86



A Yahtzee occurs when all five dice have the same value during a player's turn. Yahtzee is the most difficult combination to throw in a game and has the high score of 50 points. If a player scores one or more additional yahtzees during the same game, that player is awarded bonus points and given bonus chips that correspond to each additional Yahtzee that a player rolls. Bonus yahtzees are worth 100 points each. Bonus chips are only awarded for subsequent Yahtzees if the first Yahtzee was placed in the 50pt Yahtzee score box. Additional Yahtzees may be used as wild cards in the lower section provided that the corresponding upper section box has been filled. For example, if a player rolled out five threes (a Yahtzee in the threes), the player could only use it as a wild card in the lower section if he or she already had a score in the "threes" box in the upper section. If the "threes" box was still open, the player must score 15 in the threes (sum of five threes)

YAHTZEE

Media Player

As the Media Player is not finished you will need to manually edit a file and enter the folder you wish to scan for MP3 and OGG music files. Open the **mediasettings.dat** which can be found in the **/yahtzee/** folder before running the game for the first time.

Next enter the starting folder you want to be scanned; it will automatically scan any subfolders found so you will only need to enter the starting folder to scan. Here are some examples:

If your music files are stored in the **/audio** folder on your Secure Digital Card you would use **/mnt/sd/audio** as the starting folder.

If your music files are stored in the **/music** folder on your Secure Digital Card you would use **/mnt/sd/music** as the starting folder.

If your music files are stored in the **/music/mp3** folder on your Secure Digital Card you would use **/mnt/sd/music/mp3** as the starting folder.

You do not need to enter the trailing **'/'** as the game will add this for you. Also do not add a new line or space after the path.

By default, the starting folder is **/mnt/sd/audio**

To change music track, press the **Select** button on your GP2X at any time to skip to the next track on your playlist. A small track information tab will appear for a few seconds in the bottom left corner of the screen to display the current track information.

If you change any music found in the playlist, please rescan by choosing the option in the Options Menu.

YAHTZEE

Credits, Donations and other Information

Author

Guyfawkes / Emuholic.com

Graphics

Guyfawkes

SFX

Guyfawkes

Assistance

Dijital

Beta Testers

Classic Gamer, gp2x.info

Donators

Dodgyville, Sir Dragoon, Cakey,
DisgruntleElf, Rabel1, Gadget, Thomas
Bryant, Elías Carmona, GunPei2X

Game rules copied from Wikipedia.

If you like Yahtzee and would like to donate some money via PayPal you can do so by sending it to guyfawkes@gbaemu.com. Many hours have been spent working on this game and while the game is free of charge, donations are greatly appreciated and go towards new hardware and server costs for my site emuholic.com. As a way of saying thanks your name will be added to my software homepage at

<http://www.emuboard.com/guyfawkes/> and any games I make in the future.

If you have any feedback on the game such as bug reporting, suggestions for new features or would just like to say thanks for the game you can email me at guyfawkes@gbaemu.com or alternatively post on my homebrew games forum post at <http://www.emuboard.com/invision/index.php?showtopic=27045> (guest posting allowed) or on the GP32x.com forums (free registration required).

Yahtzee may be mirrored only on the GP2X Archive as other sites do not keep their files up to date. Yahtzee may be freely distributed providing the original archive is unaltered and no money is made from the game, i.e. selling a compilation CD for profit or subscription/registration based downloads.

YAHTZEE

Other software from Emuholic

You can visit the Emuholic software homepage at

<http://www.emuboard.com/guyfawkes/> for other games for the GP2X, GP32, PSP and GBA. Here are the some of the latest games for the GP2X.



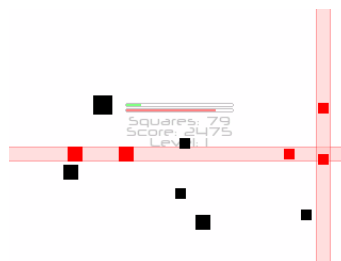
Deal or No Deal



Bunny Traps



Memory



Squares